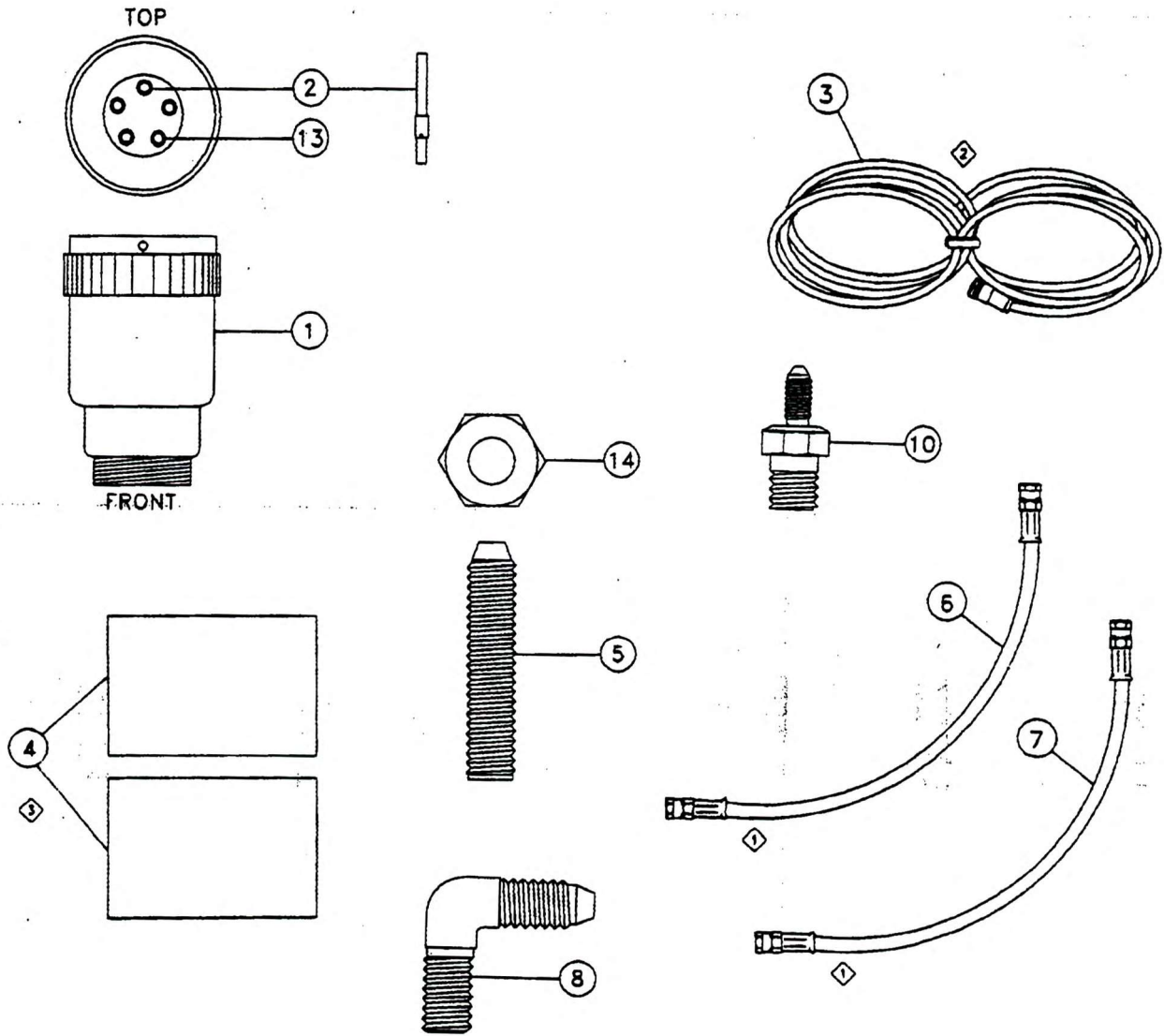
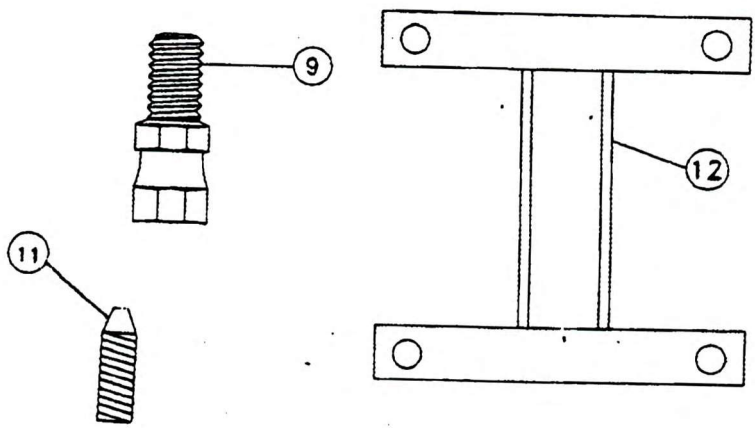


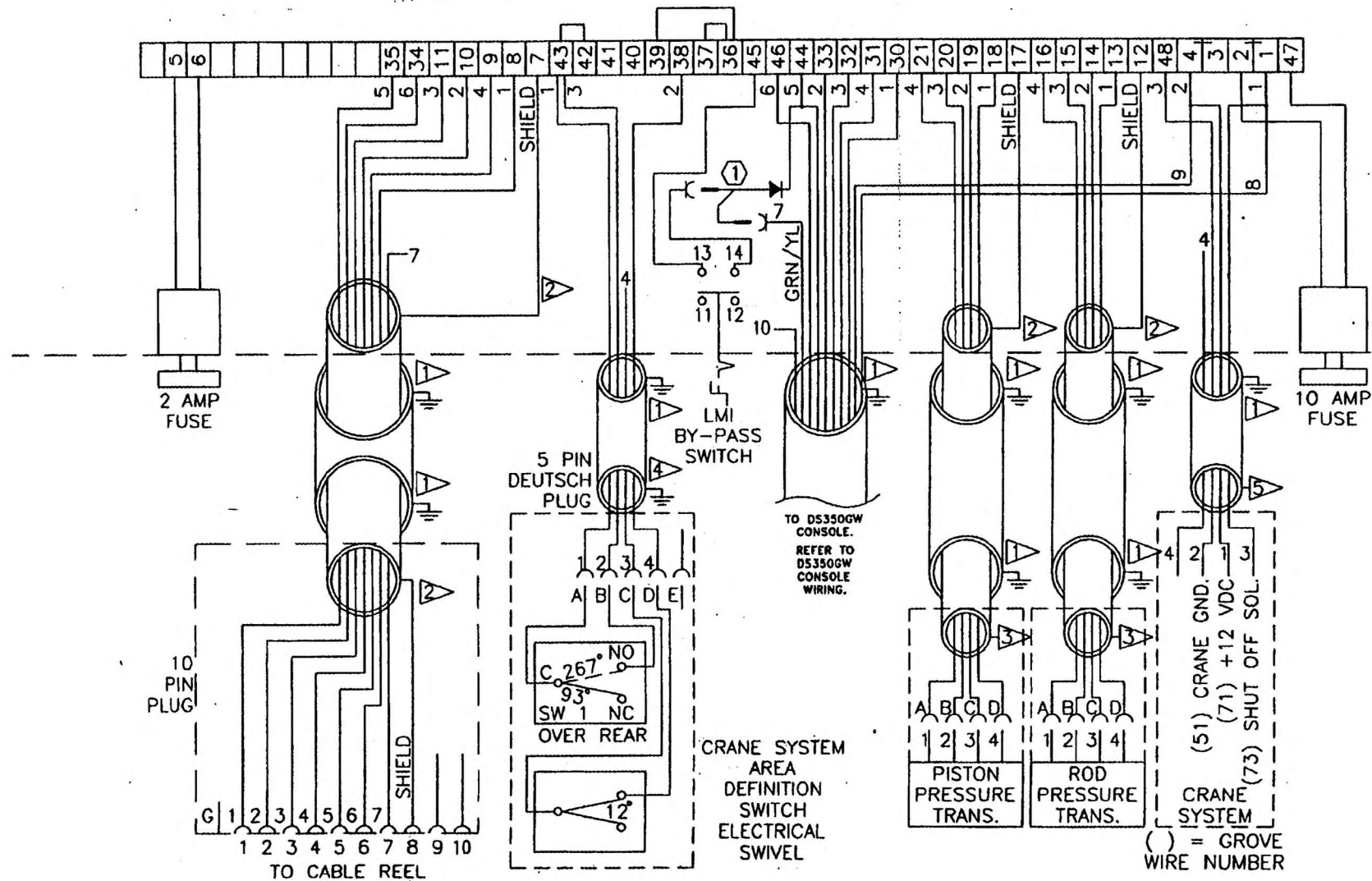
# Manitowoc Crane Group



**NOTES:**

- ① REFER TO GROVE HYDRAULIC SCHEMATIC FOR CONNECTION.  
**WARNING: DO NOT REMOVE HYDRAULIC COMPONENTS UNDER PRESSURE. ALWAYS REFER TO CRANE MANUFACTURER'S SERVICE MAINTENANCE INSTRUCTIONS AND DOCUMENTATION.**
- ② REFER TO ELECTRICAL DIAGRAM FOR CONNECTION.
- ③ REFER TO INSTALLATION DRAWING AND GROVE WELDMENT DRAWING FOR INSTALLATION AND LOCATION.
- ④ ADD DIELECTRIC LUBRICANT (e.g. NYOGEL 758G) TO INSIDE OF RECEPTACLES, PLUGS, AND ELECTRICAL CONNECTORS, TO IMPROVE PROTECTION AGAINST CORROSION AND MALFUNCTION DUE TO CONDENSATION.
  - A. CLEAN ELECTRICAL CONTACTS AND CONNECTORS OF ALL FOREIGN MATERIAL SUCH AS GREASE, OIL, AND DIRT BEFORE APPLYING LUBRICANT.
  - B. APPLY A GENEROUS AMOUNT OF LUBRICANT ON THE ELECTRICAL CONTACTS AND CONNECTORS BEFORE MOUNTING.
  - C. AFTER MATING CONTACTS AND CONNECTORS, CLEAN OFF THE EXCESS SQUEEZED OUT.



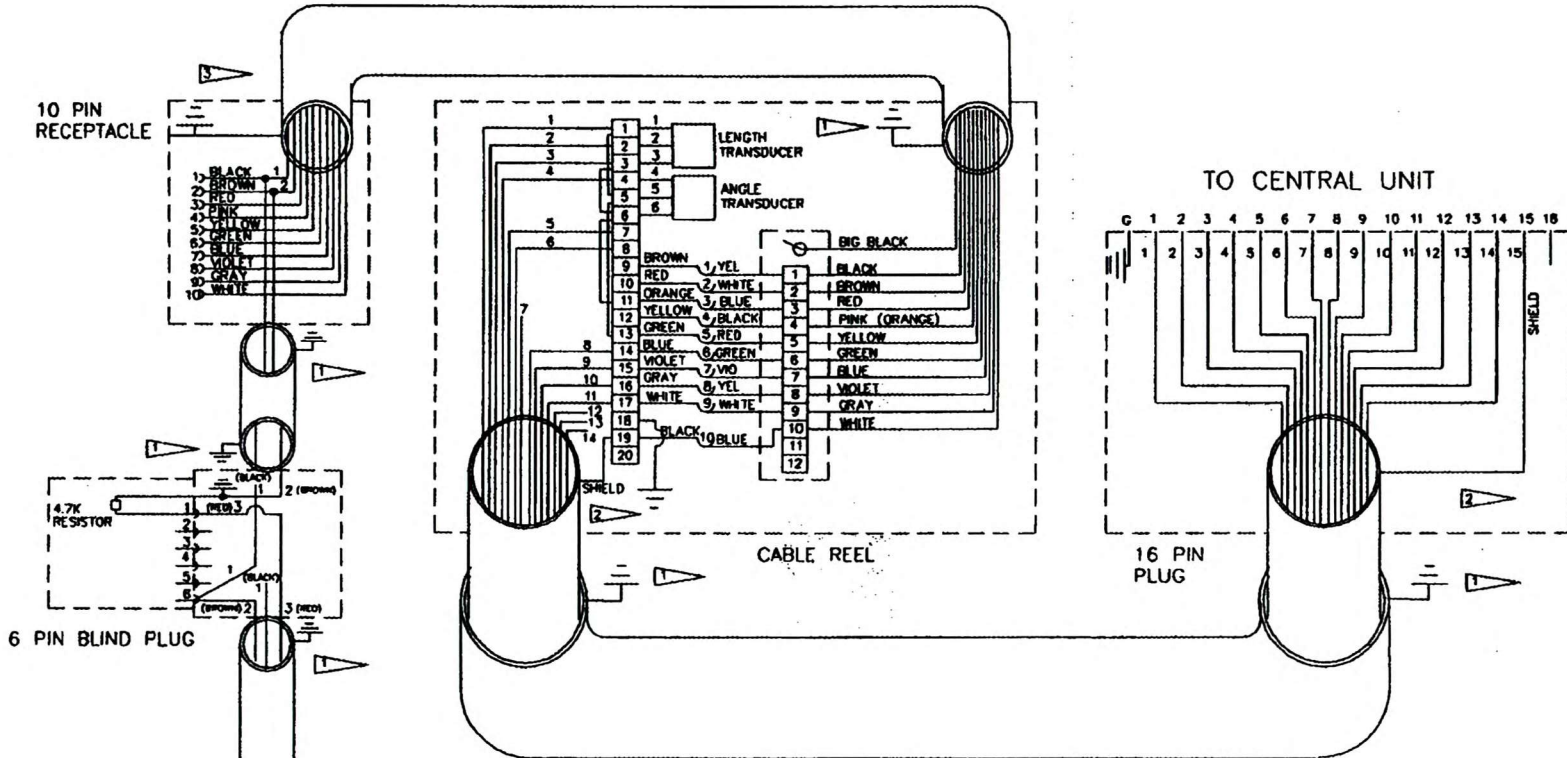


NOTES:

- ① DIODE IS PREWIRED. CONNECT WIRE NO. 7 OF CONSOLE CABLE TO FASTON CONNECTOR OF DIODE AS SHOWN.
- ▽ OUTER SHIELD GROUNDED AT STRAIN RELIEF CONNECTOR.
- ▽ INSULATED WIRE SOLDERED TO INNER SHIELD AND CONNECTED AS SHOWN.

- ▽ INNER SHIELD CUT OFF AND TAPED.
- ▽ OUTER SHIELD CUT OFF AND TAPED.
- ▽ OUTER SHIELD CONNECTED TO CRANE CHASSIS GROUND.

LOWER ELECTRICAL DIAGRAM  
LMI SUPERSTRUCTURE INSTALLATION



- NOTES:
- 1 OUTER SHIELD GROUNDED AT STRAIN RELIEF CONNECTOR
  - 2 INNER SHIELD INSULATED AND CONNECTED AS SHOWN
  - 3 OUTER SHIELD INSULATED AND CONNECTED AS SHOWN
  - 4 SWITCH PREWIRED AND POTTED

ELECTRICAL DIAGRAM  
BOOM A2B COMPONENT  
INSTALLATION